

The PLCoreManTM module

USER MANUAL

PLPAKTM Version 1.02

STRUCTURAL ANALYSIS SOFTWARE USING
THE BOUNDARY ELEMENTS METHOD

Copyright © 2000-2011 <http://www.be4e.com>

E-mail: support@be4e.com

Table of Contents

Disclaimer	3
Copyright	4
PLCoreMan operation diagram.....	5
PLCoreMan Philosophy	5
PLCoreMan Workspace.....	6
PLCoreMan menus	7
The File menu	7
File Open (.LC) file.....	7
File Reload (.LC) file	7
File IN2LC tool	8
File PL Controls	8
File Exit.....	12
The View menu.....	12
The Run menu.....	13
Run PLView.....	13
Run PT Cable Calculator.....	13
Run PT Update.....	13
Run PL.EXE.....	14
Run PLPost.....	14
The Help menu.....	15
Help Help	15
Help Show Details.....	15
Help Register PLPAK	16
Help About	16
Getting Help	17

Disclaimer

Considerable time, effort and expense have gone into the development and documentation of the PLPAK™ software. The PLPAK™ software has been thoroughly tested and used. The PLPAK™ software should be used by engineers with good understanding of concrete behavior, pre-stressing and structural mechanics. The user accepts and understands that no warranty is expressed or implied by the developers or the distributors on the accuracy or the reliability of the PLPAK™ software. The user must explicitly understand the assumptions of the PLPAK™ software and must independently verify the results produced by the PLPAK™ software.

Copyright

Copyright © BE4E.com, 2000-2011
All rights reserved.

The PLPAK™, PLGen™, PLView™, PLCoreMan™, PLPost™, PTPAK™, PL™, PL.EXE™ are registered trademarks of BE4E.com.

The computer program PLPAK™ and all associated documentation are proprietary and copyrighted products. Worldwide rights of ownership rest with BE4E.com.
Unauthorized use of these programs or reproduction of documentation in any form, without prior written authorization from BE4E.com is explicitly prohibited.

No part of this publication may be reproduced or distributed in any form or by any means, or stored in a database or retrieval system, without the prior explicit written permission of the BE4E.com.

Further information and copies of this documentation may be obtained from:

Phone: (732) 325-2616

Skype: yousef.f.rashed (technical director, Dr. Youssef F. Rashed)

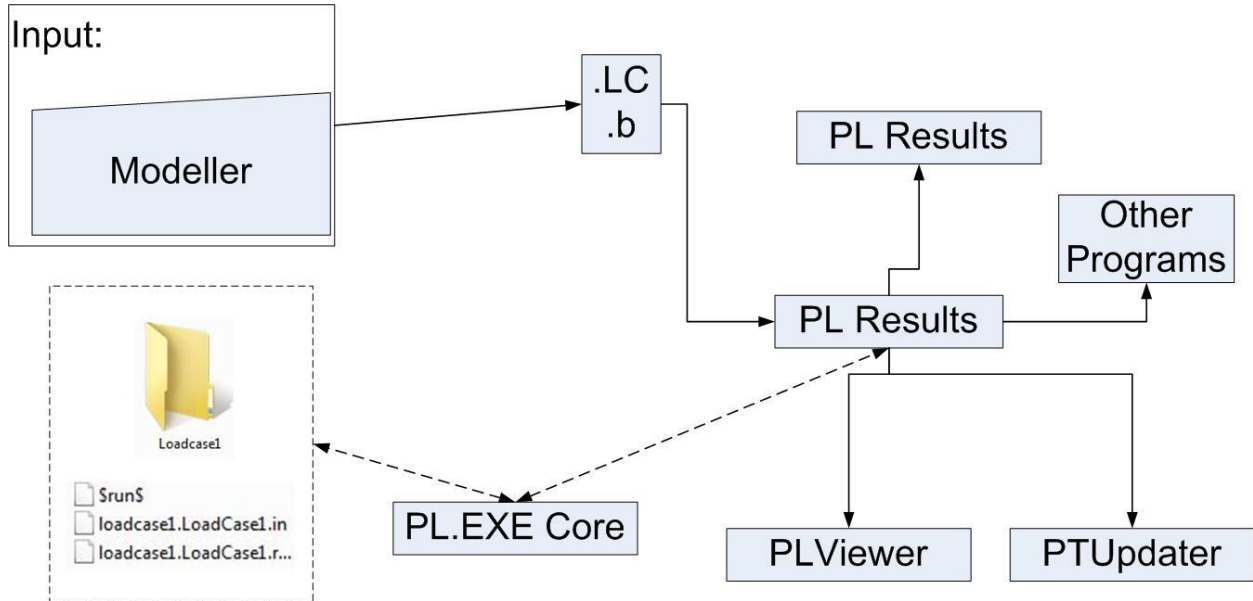
e-mail: info@be4e.com (for general questions)

e-mail: support@be4e.com (for technical support questions)

web: www.be4e.com

PLCoreMan operation diagram

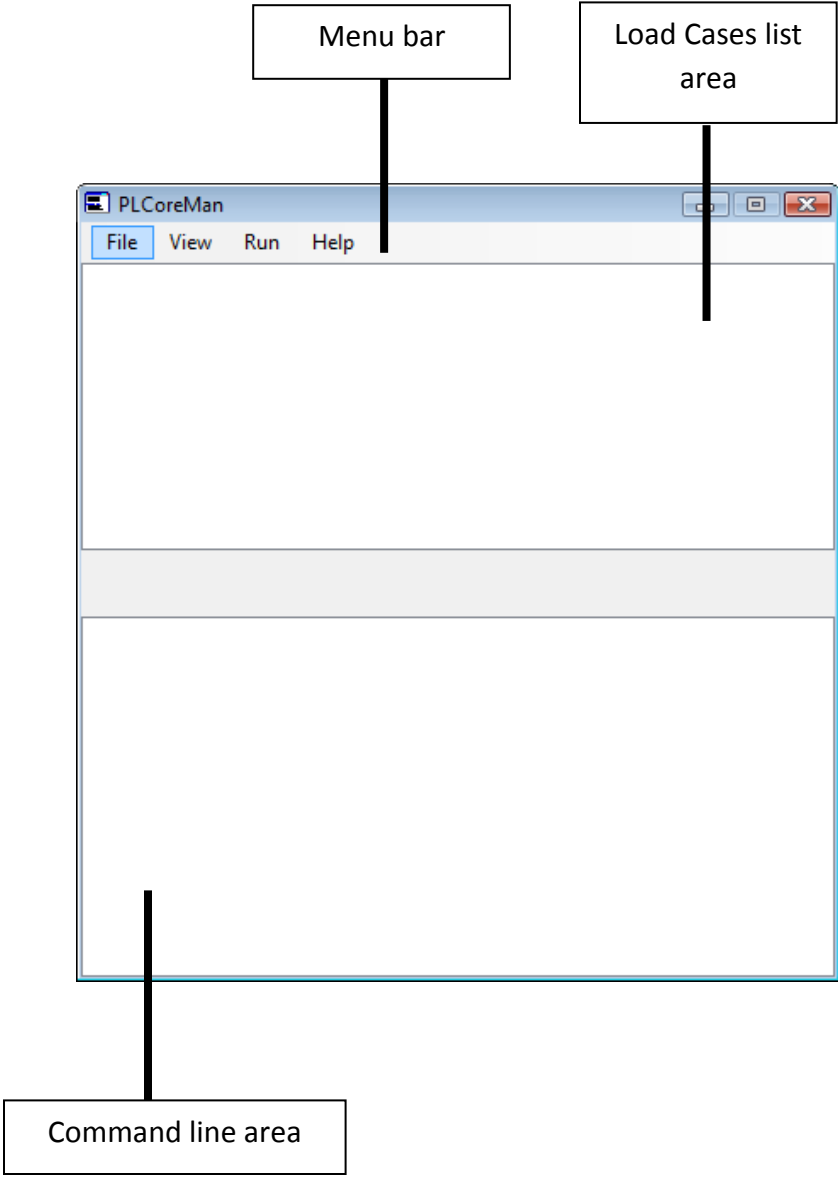
The figure below shows the operation diagram for the PLCoreMan module.



PLCoreMan Philosophy

The PLCoreMan component of the PLPAK is the one responsible for solving the numerical model. The PLCoreMan contains the PL.exe Command Line Solver as well as several programs which are required to complete the boundary element solution.

PLCoreMan Workspace

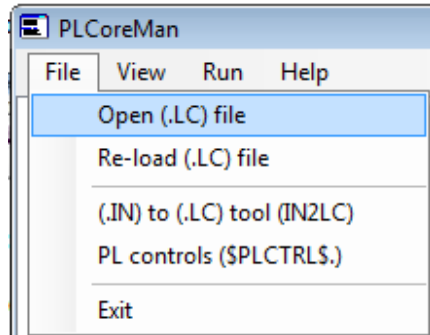


PLCoreMan menus

The File menu

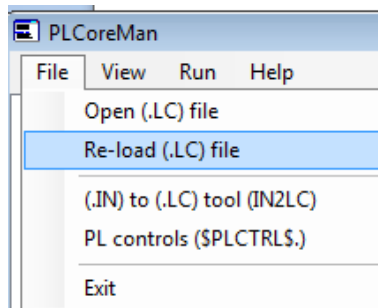
File | Open (.LC) file

This command is used to open the (.LC) file that was previously saved from the PLGen model.



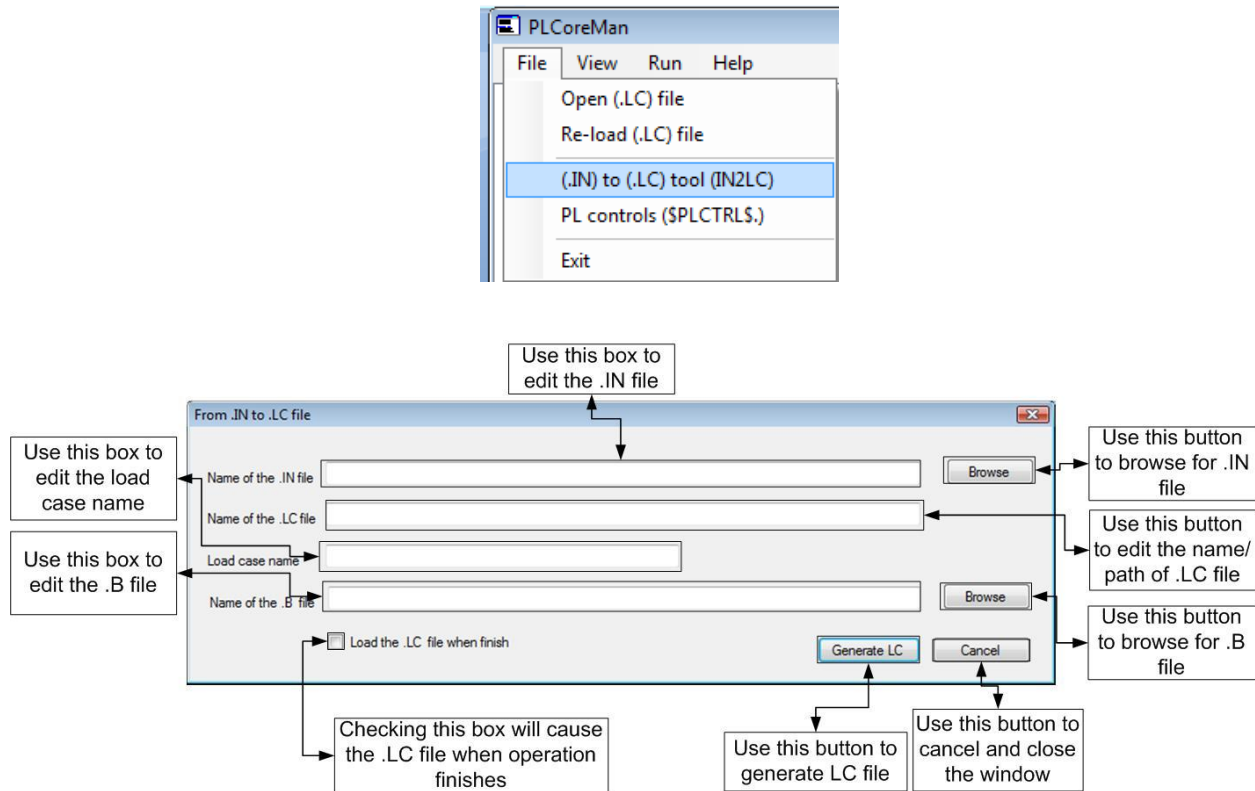
File | Reload (.LC) file

This command is used to reload the (.LC) file that was previously saved from the PLGen model.



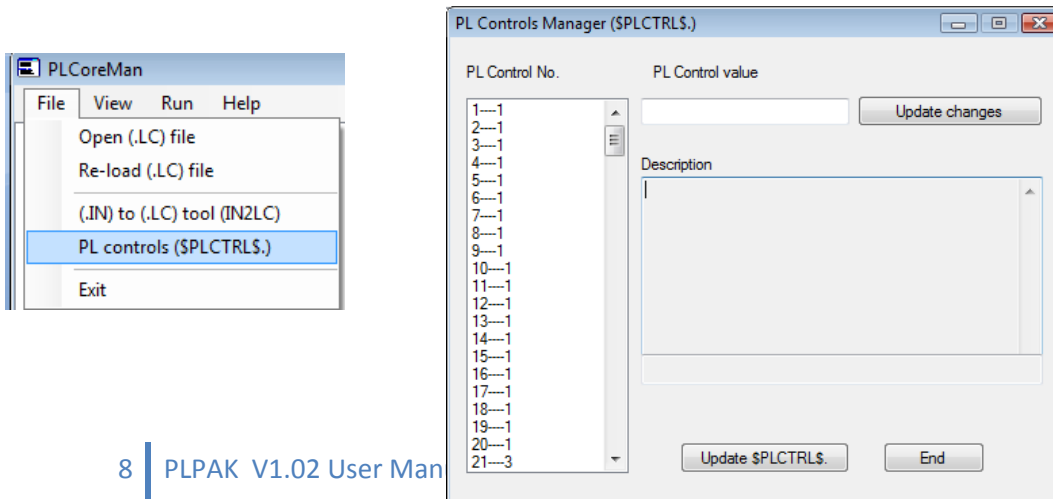
File | IN2LC tool

This command is used to convert input files written by advanced users to Load case files similar to that produced by PLGen. This command will produce a dialogue box which is used to input the input file(.IN), name of loadcase file (.LC) required, name of load case, and name of beam data file (.b). This dialogue box can then be used to generate the (.LC) file.



File | PL Controls

This command is used to define certain advanced properties of the numerical model. This command will produce a dialogue box which has controls for PL.exe command solver.



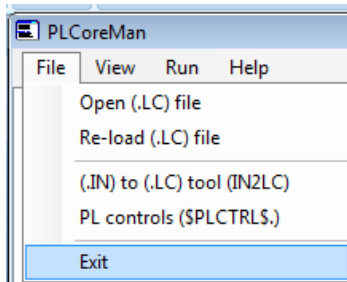
Line no	Default	Range	Description
1	0	0 OR 1	A flag to print titles section in the output file. Could be equal to 0 (to cancel printing) or 1 (to print data in the output file).
2	0	0 OR 1	A flag to print basic data section. Could be equal to 0 (to cancel printing) or 1 (to print data in the output file).
3	0	0 OR 1	A flag to print extreme point data section. Could be equal to 0 (to cancel printing) or 1 (to print data in the output file).
4	0	0 OR 1	A flag to print nodal data section. Could be equal to 0 (to cancel printing) or 1 (to print data in the output file).
5	0	0 OR 1	A flag to print boundary element data section. Could be equal to 0 (to cancel printing) or 1 (to print data in the output file).
6	0	0 OR 1	A flag to print boundary element connectivity section. Could be equal to 0 (to cancel printing) or 1 (to print data in the output file).
7	0	0 OR 1	A flag to print boundary conditions section. Could be equal to 0 (to cancel printing) or 1 (to print data in the output file).
8	0	0 OR 1	A flag to print internal point data section. Could be equal to 0 (to cancel printing) or 1 (to print data in the output file).
9	0	0 OR 1	A flag to print internal cells data section. Could be equal to 0 (to cancel printing) or 1 (to print data in the output file).
10	0	0 OR 1	A flag to print internal support data section. Could be equal to 0 (to cancel printing) or 1 (to print data in the output file).
11	1	0 OR 1	A flag to print output results for the solution of equations procedure. Could be equal to 0 (to cancel printing) or 1 (to print data in the output file).
12	1	0 OR 1	A flag to print generalized boundary nodal displacements section. Could be equal to 0 (to cancel printing) or 1 (to print data in the output file).
13	1	0 OR 1	A flag to print generalized boundary nodal tractions section. Could be equal to 0 (to cancel printing) or 1 (to print data in the output file).
14	1	0 OR 1	A flag to print generalized displacements at internal support section. Could be equal to 0 (to cancel printing) or 1 (to print data in the output file).
15	1	0 OR 1	A flag to print generalized forces at internal support section. Could be equal to 0 (to cancel printing) or 1 (to print data in the output file).
16	1	0 OR 1	A flag to print number of updated internal cells after solution. Could be equal to 0 (to cancel printing) or 1 (to print data in the output file).
17	1	0 TO 2	A flag responsible for boundary element reactions:
			0: boundary element reactions will be computed but will not be printed,
			1: boundary element reactions will be computed and printed, and
			2: boundary element reactions will not be computed.
Line no	Default	Range	Description

18	2	0 TO 2	A flag responsible for boundary element stress resultants:
			0: boundary element stress resultants will be computed but will not be printed,
			1: boundary element stress resultants will be computed and printed, and
			2: boundary element stress resultants will not computed.
19	1	0 TO 2	A flag responsible for generalized displacements at internal points:
			0: generalized displacements at internal points will be computed but will not be printed,
			1: generalized displacements at internal points will be computed and printed, and
			2: generalized displacements at internal points will not computed.
20	0	0 TO 2	A flag responsible for stress resultants at internal points:
			0: stress resultants at internal points will be computed but will not be printed,
			1: stress resultants at internal points will be computed and printed, and
			2: stress resultants at internal points will not computed.
21	3	n	PL version
22	1	n	PL release
23	0	0 OR 1	0: use the Gauss point number in the .in when calculating the internal point values, or
			1:use the prescribed Gauss point numbers in (24 & 25) when computing the internal values of displacements and stress resultants
24	4	n	Gauss point number for computing internal point displacements (recall flag no 23)
25	4	n	Gauss point number for computing internal point stress resultants (recall flag no. 23)
26	1	0 OR 1	0: use only one cell even if the internal point is located inside it (displacement calc.)
			1:use cell division (4 sub cells) when the internal point is located inside it
27	1	0 OR 1	0: use only one cell even if the internal point is located inside it (stress resultant calc.)
			1:use cell division (4 sub cells) when the internal point is located inside it
28	1	0 OR 1	0:do not adjust Qabove for the internal points (use value from input file)
			1:adjust value of Qabove for internal points according to the bounded cell (In this case the flag(27) has to be one to allow the cell division)-NOTE: this also applied to circular cells and in this case only flag (28) to be one is enough to make this work, i.e. in case of circular cells flag(27) is ignored in the adjustment of Qabove
29	1	0 OR 1	0: will not print the updated Qabove statement in the Log file (recall flag 28)
			1: will print the internal cells update statement for Qabove
Line no	Default	Range	Description

30	1	0 OR 1	If 1 series of numbers: 15.01, 15.02, 15.03, 15.04, 15.05 will be printed in the (.STT) file when computing the internal point displacements to indicate the finished percentage
31	1	0 OR 1	if 1 series of numbers: 15.1, 15.2, 15.3, 15.4, 15.5 will be printed in the (.STT) file when computing the internal point stress resultants to indicate the finished percentage
32	1	0 OR 1	if 1 the internal collocation point will be moved to the center of the circular cell if it is inside it. This is to avoid any numerical error.
40	0	0 OR 1	if 1 TURN OFF WARNINGS (START FROM WARNING 320)
97	n	n	if flag no 26 =1 then it compares the area of the divided cells to the original one; if such ratio is less than 1/n it ignores the contribution of this cell
98	n	n	if flag no 27 =1 then it compares the area of the divided cells to the original one; if such ratio is less than 1/n it ignores the contribution of this cell
99	3	0 TO 3	0 TO 3: Adaptive scheme for internal stresses resultant calculations (recommended 3)
100	0	0 OR 1	0 OR 1: 0: PL.EXE continue solution & 1: PL.EXE stop after generating matrices
101	0	0 OR 1	0 OR 1:no/yes print the [H] matrix in \$HMAT\$. file
102	0	0 OR 1	0 OR 1:no/yes print the [G] matrix in the \$GMAT\$. File
103	0	0 TO 2	0 TO 2:no/yes [A SMALL]/yes [A BIG] - print the relevant matrix in \$AMAT\$. File
104	0	0 OR 1	no/yes print the [1] matrix in \$1MAT\$. File
105	0	0 OR 1	no/yes print the [1b] matrix in \$1BMAT\$. file
106	0	0 OR 1	no/yes print the [2] matrix in \$2MAT\$. file
107	0	0 OR 1	no/yes print the [3] matrix in \$3MAT\$. File
108	0	0 OR 1	no/yes print the [13] matrix in \$13MAT\$. File
109	0	0 OR 1	no/yes print the [2b] matrix in \$2BMAT\$. File
110	0	0 OR 1	no/yes print the [23b] matrix in \$23BMAT\$. File
111	0	0 OR 1	no/yes print the [3b] matrix in \$3BMAT\$. File
112	0	0 OR 1	no/yes print the [2d] matrix in \$2DMAT\$. File
113	0	0 OR 1	no/yes print the [3d] matrix in \$3DMAT\$. File
114	0	0 OR 1	no/yes print the [13d] matrix in \$13DMAT\$. File
115	0	0 OR 1	no/yes print the [2bd] matrix in \$2BDMAT\$. File
116	0	0 OR 1	no/yes print the [23bd] matrix in \$23BDMAT\$. file
117	0	0 OR 1	no/yes print the [3bd] matrix in \$3BDMAT\$. File
118	0	0 OR 1	no/yes print the {RHS1} matrix in \$RHS1\$. File
119	0	0 OR 1	no/yes print the {RHS2} matrix in \$RHS2\$. File
120	0	0 OR 1	no/yes print the [Hcb] matrix in \$HCBMAT\$. File
121	0	0 OR 1	no/yes print the [Gcb] matrix in \$GCBMAT\$. File

File | Exit

This command is used to close the PLCoreMan window.



The View menu

The commands in this menu are used to view different text files that are used by the model. Each file has a certain model data. File properties are summarized in the following tables:

Input files definitions

File	Definition
*.in	The model input file
*.run	The run file that contains a flag to specify the mode of solutions (IRUN flag) and the paths of all other files
\$run\$	Contains the path to the run file to direct the solver to the problem
\$PLctrl\$	Contains some flags that can control the output of the PL core solver

Output files definitions

File	Definition
*.out	A formatted output file
*.t	Contains the tractions of the internal cells and boundary nodes
*.u	Contains the displacements of the boundary nodes
*.ber	Contains the displacements of the boundary elements reactions
*.bs	Contains the stress resultants at the boundary nodes
*.ips	Contains the internal points displacements
*.ipu	Contains the internal points displacements

Tracing files definitions

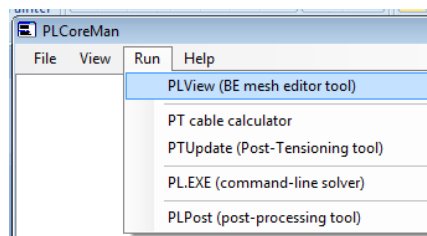
File	Definition
*.stt	A file that stores integers corresponding to stages of solution
*.log	A log files that stores the solution history

The Run menu

The commands in this menu are used to run different components of the PLPAK

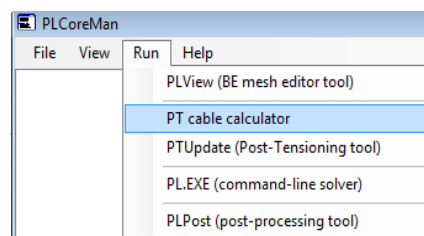
Run | PLView

This command is used to run the PLView module, the component of the PLPAK which has the boundary element model.



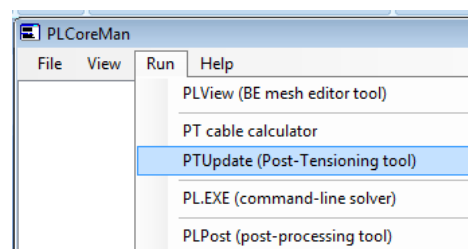
Run | PT Cable Calculator

This command is used to run the PT Cable Calculator.



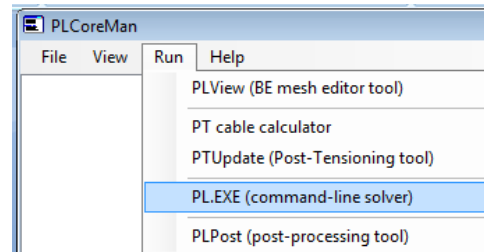
Run | PT Update

This command is used to run the PTUpdate.



Run | PL.EXE

This command is used to run PL.Exe which is the main solver of the whole model.

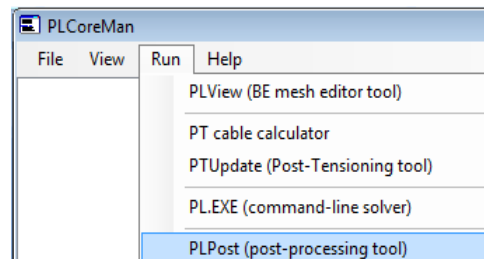


As previously stated, the PLPak creates structural analysis solutions using BE model and the Reissner Plate Equation. The main solver is the “PL.exe” command line which is retrieved from the PLCoreMan, the PL.exe creates solutions for the boundaries and supports only. In order to find solutions for any other internal points, two methods are available:

1. Using the PLPost (the post processing component of the PLPAK) to solve for internal points. The PLPost actually calls the “PL.exe” command line to solve for the internal points, thus, providing real-solution rather than interpolation. This process increases the accuracy of the produced results.
2. Defining internal points to be solved from the PLGen.

Run | PLPost

This command is used to run PLPost which is the post processor and result viewer component of the PLPAK.



The PLPost allows the user to view structural analysis results in different ways under the effect of single load cases or load combinations (which are defined from the PLPost):

1. Plotting contours either on the whole system or at local points if high accuracy contours are required.
2. Drawing strips.

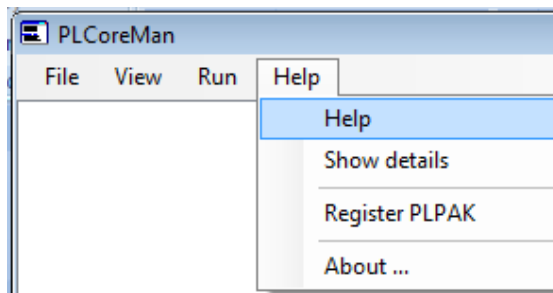
3. Viewing paths (Strip data that can be imported from text files).
4. Reactions at columns, beams and walls.
5. Straining actions in beams.

Please note that PLPost allows the user to read structural analysis results in any direction, in addition, it has the ability to calculate design moment using “Wood and Armor” equation.

The Help menu

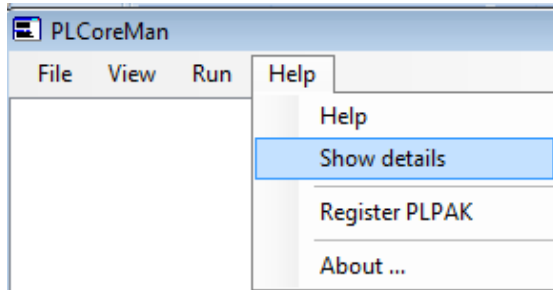
Help |Help

Opens the Help file of the PLCoreMan.



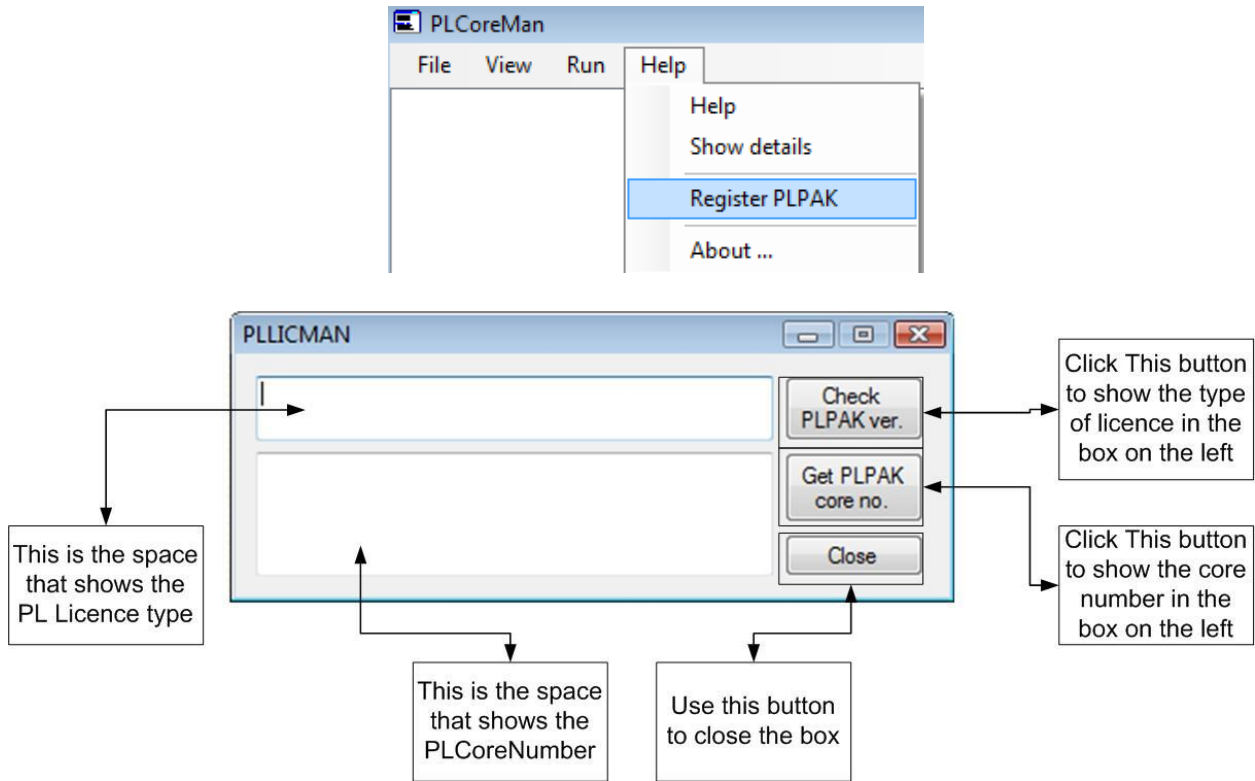
Help |Show Details

This button is used to show or hide run details.



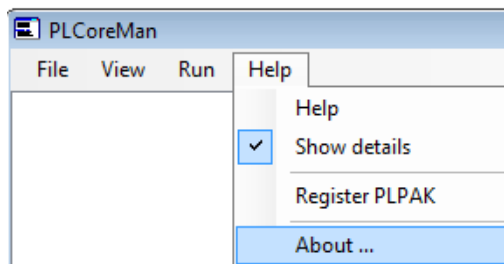
Help |Register PLPAK

This button runs the registry dialogue box. This box can be used to check the type of license and get the core number which is required to license the program.



Help |About

Shows the about dialogue box for the PLPAK.



Getting Help

The BE4E.com customer support team is always welcoming problems and suggestions of registered customers. Just send an e-mail including your questions, or your model together with your questions to: support@be4e.com

Also check our site news at www.be4e.com regularly for *Problems and Solutions* section and the *Frequently Asked Questions* section