



USER MANUAL

PLPak Version 1.01

**STRUCTURAL ANALYSIS SOFTWARE USING BOUNDARY ELEMENTS
METHOD**

PLPAK basic tutorials

Tutorial 1 – PLGen basics

CONTACT DETAILS:

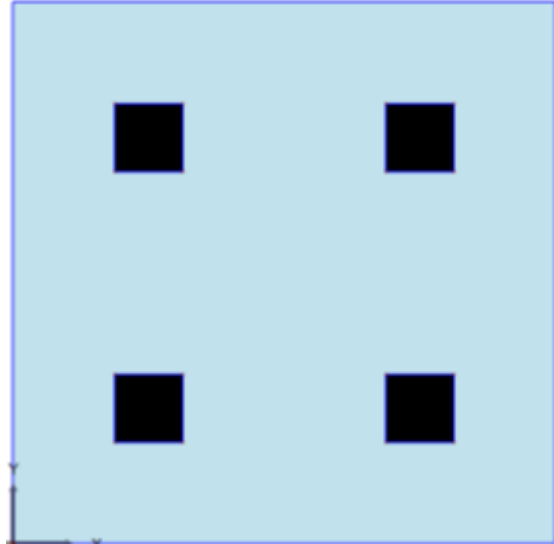
www.be4e.com

support@be4e.com

Tutorial 1

The objective of this tutorial is to model a structure using the basic features of the PLPAK.

I – Draw a 4m x 4m slab with four columns offset 1m from the edge.



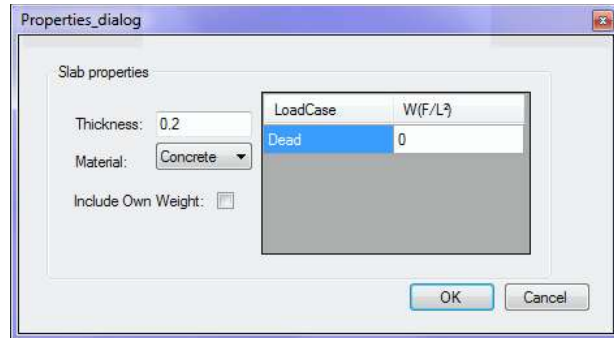
II- Edit the concrete properties such the Young's Modulus is 26031 kN/m and the Nieu and Gamma values are 0.2 and 25 kN/m³ respectively. The material properties are altered by selecting the objects then Define> Materials. Select concrete then Edit and the shown dialogue box will appear.



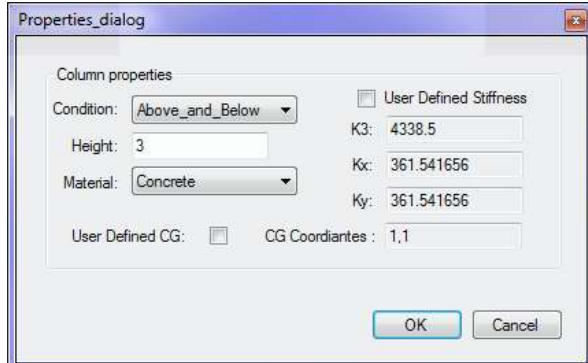
III-Define a load case by clicking load cases from the define menu. The shown dialogue box will appear and is edited by selecting the load case then Edit. It will be named 'Dead'.



IV-On the select mode right click on the slab and properties dialogue box will appear. The own weight of the slab included by ticking the box next to the option.



V-The column properties are edited by right clicking on the column and the shown dialogue box will appear. Let the column condition be above and below.



VI- Save the file by clicking Save gen. From the file menu. Name the file according to your preference.

