



USER MANUAL

PLPak Version 1.01

**STRUCTURAL ANALYSIS SOFTWARE USING BOUNDARY ELEMENTS
METHOD**

PLPAK basic tutorials

Tutorial 2 – PLGen running examples

CONTACT DETAILS:

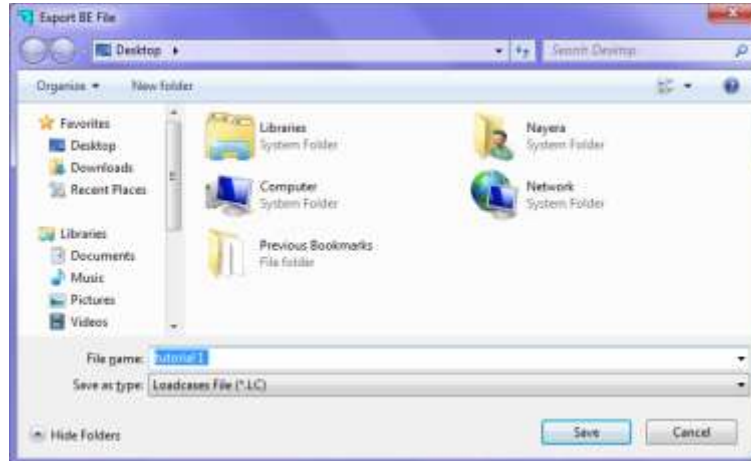
www.be4e.com

support@be4e.com

Tutorial 2

The objective of this tutorial is to discover the different means by which we can run the previously created model.

I – From the Tools menu click Run .The ‘Export BE file’ dialogue box will appear and the load case file will be given the name ‘Tutorial1’

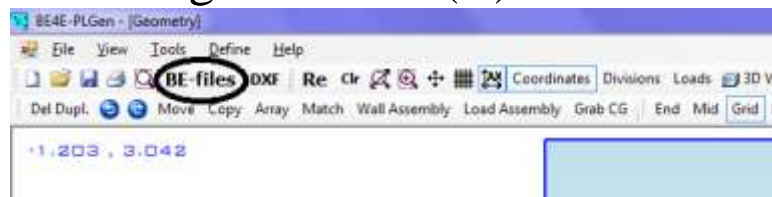


II- The PL Core Manager will automatically appear. From the Run menu select PL.exe (command line solver) to run the model.



Running the model(II)

I - Click on BE files to export the input file, in this case the .LC file.



II – The shown box will appear. Name the file as you please.



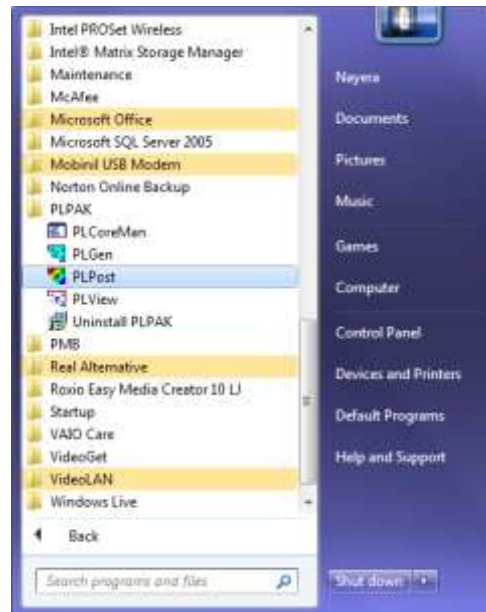
III – Open the PLCore Manager



IV - Open the load case through file, open .LC file, and the load cases will be loaded into the interface as shown.



Whether the program was run using the first alternative or the second open the PLPost to open the numerical model loaded.



Import the .LC file



The PLPost offers diverse array of results and analysis tools, such as viewing rotations, deflection, shears, bending moments and torsion moment on the slab.

