



USER MANUAL

PLPak Version 1.01

**STRUCTURAL ANALYSIS SOFTWARE USING BOUNDARY ELEMENTS
METHOD**

PLPAK basic tutorials

Tutorial 3(i) – PLPost basics

CONTACT DETAILS:

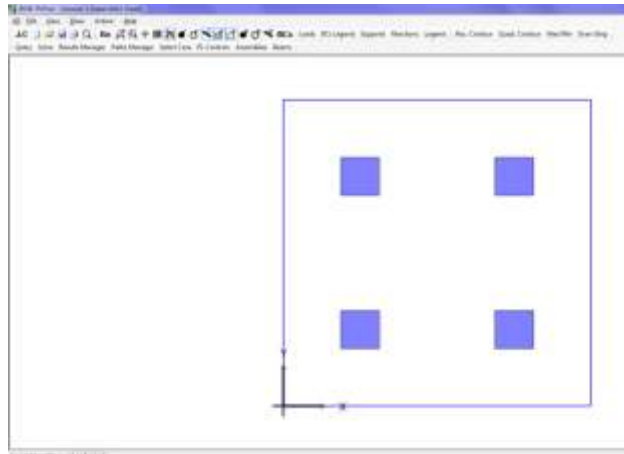
www.be4e.com

support@be4e.com

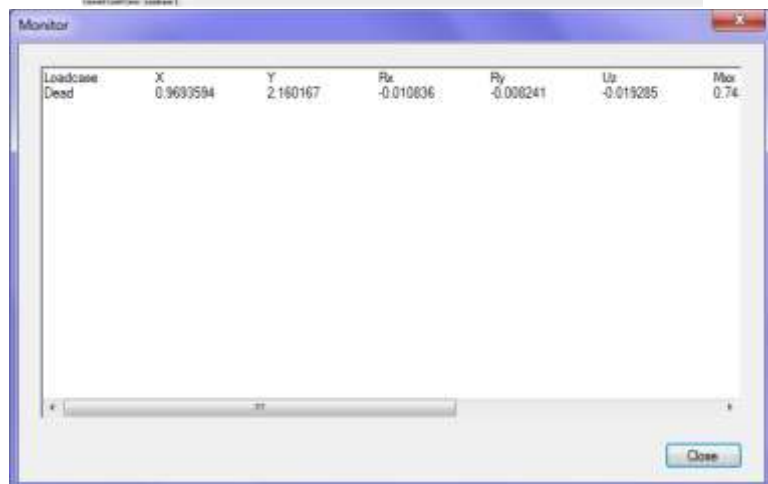
Tutorial 3 (Part I)

In this tutorial we will cover the main elements of the PLPost such as the results manager and viewing the straining actions acting on points on the slab.

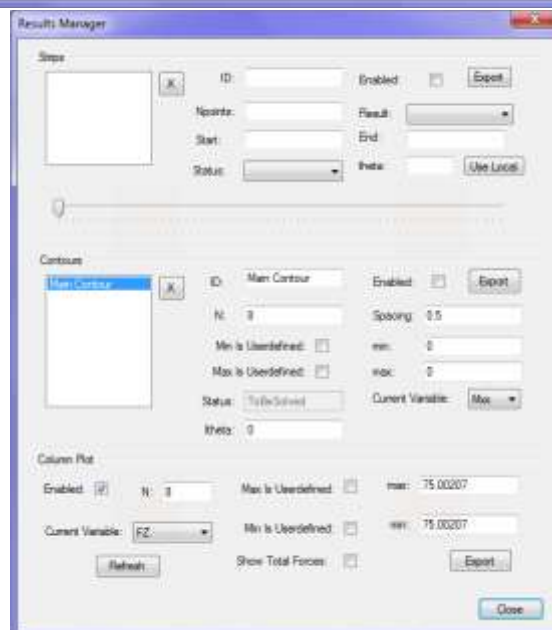
I – Open the PLPost then click .LC and open the file previously created.



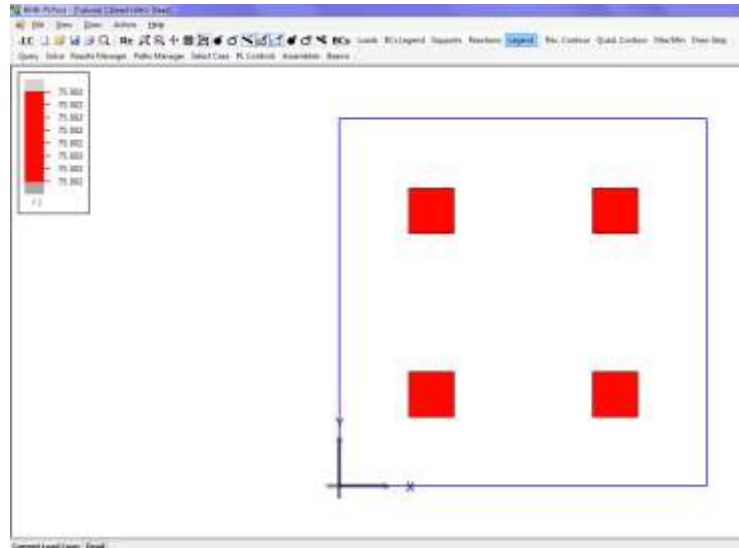
II – To inquire about the straining actions acting on a point in the slab click Query. A box dialogue appears showing the load case, rotation, moment and shear.



III – The column plot shows the pressure acting on the column to show this feature click on Results Manager then enable the column plot.



IV – After refreshing the columns will be coloured in order to see the significance of the colours we click on Legend in the top bar.



V – From the Results Manager tick the box next to 'Show Total Forces' and close the box then click on Reactions in the top bar. The reactions will then be shown on the diagram.

