



USER MANUAL

PLPak Version 1.01

**STRUCTURAL ANALYSIS SOFTWARE USING BOUNDARY
ELEMENTS METHOD**

PLPAK basic tutorials

Tutorial 12 – PLView boundary element model

CONTACT DETAILS:

www.be4e.com

support@be4e.com

Tutorial 12

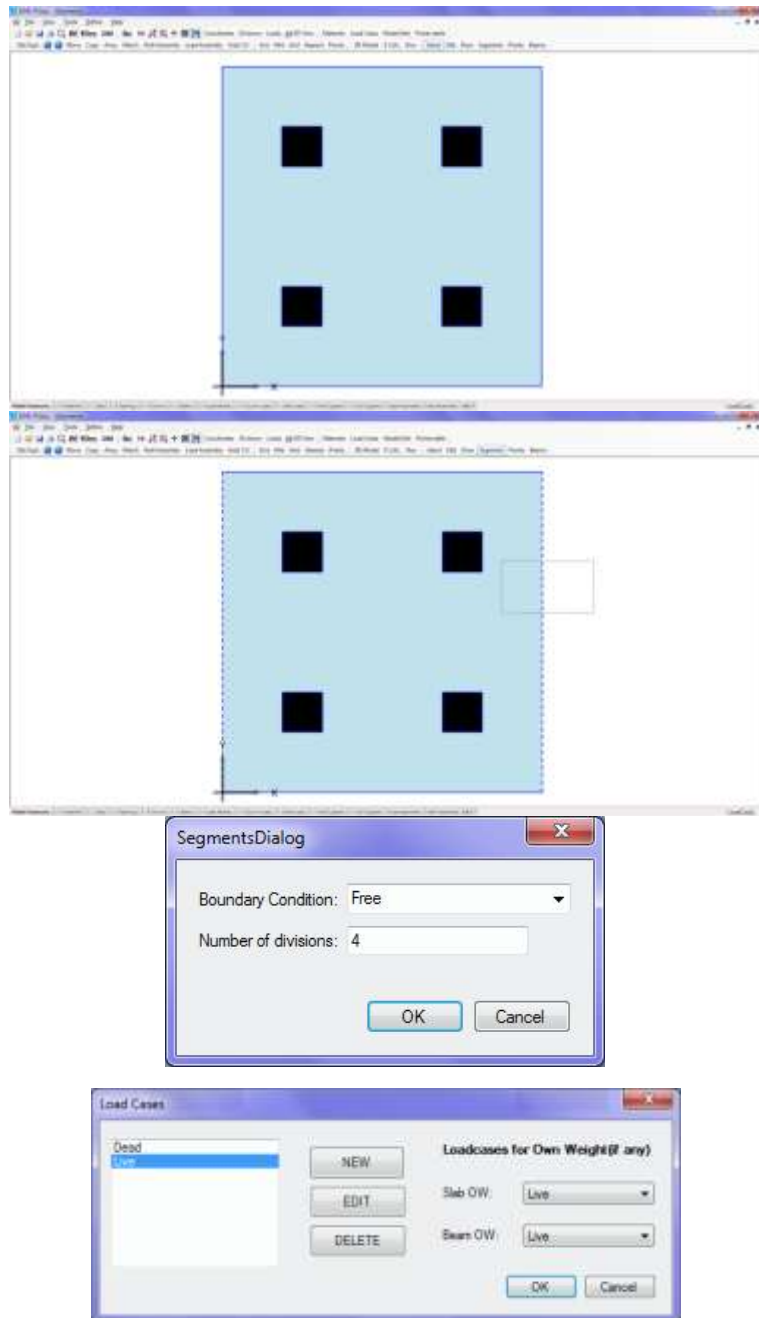
The objective of this tutorial is to view a boundary element model in the PLView and explain the use of the segment mode.

I – In this tutorial the usual structure will be used, a slab with four columns.

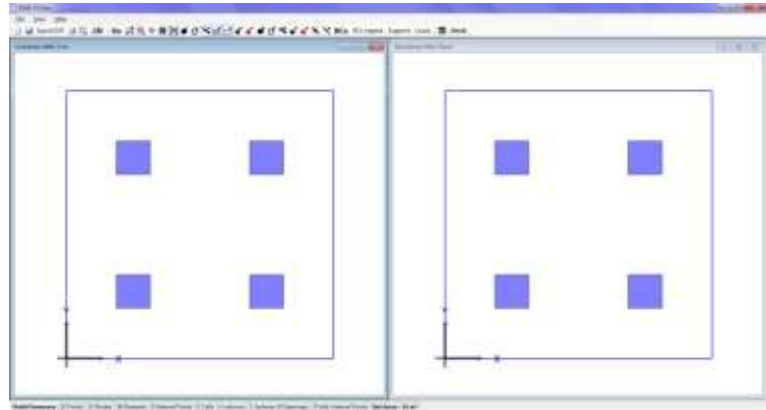
II – Under Segments mode, select the edge of the slab using the crossing method by dragging from right to left (as shown) or simply click on the segment they will appear dashed not solid as others. Note that clicking and dragging from the left to the right does not highlight the edge.

III – Right-click anywhere to open the Dialogue Box. The number of divisions is the number of boundary elements along the edge selected where calculation occurs for the model. The number of divisions is checked by clicking on Divisions.

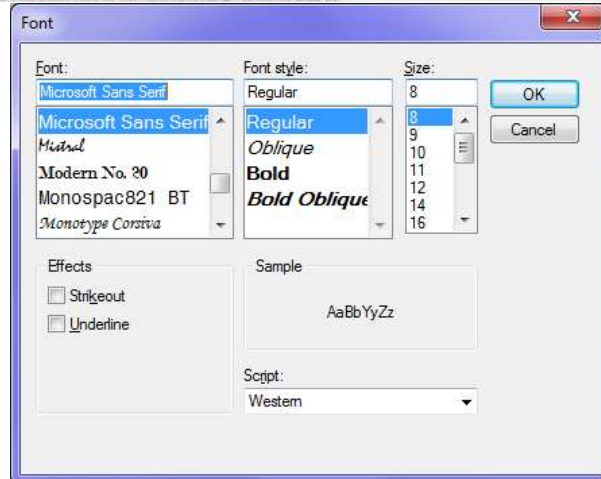
IV – Click on Load Cases and create a new one. Such that we now have two load cases 'Live' and 'Dead'.



V- When opening the BE Model notice that we have two windows for the two load cases.



VI – Right-clicking anywhere in the workspace displays two options Font and View Options. Clicking on the Font the shown box appears. The font allows the user to choose a font, size and font style for the supports text.



VII – Clicking on View options the shown box appears. This allows the user to choose the colours of the elements and nodes as well as adjust the grid spacing and the opacity of the colours.

