



USER MANUAL

PLPak Version 1.01

**STRUCTURAL ANALYSIS SOFTWARE USING BOUNDARY
ELEMENTS METHOD**

PLPAK basic tutorials

Tutorial 22 – PLPost paths

CONTACT DETAILS:

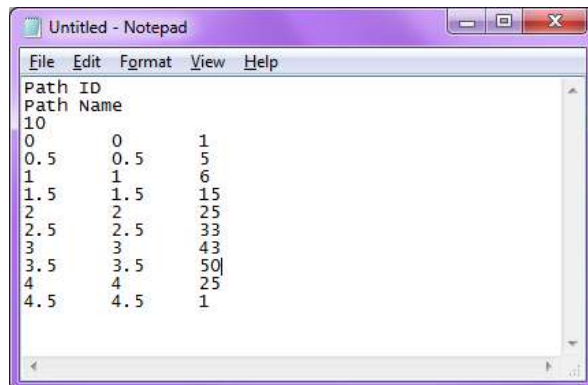
www.be4e.com

support@be4e.com

Tutorial 22

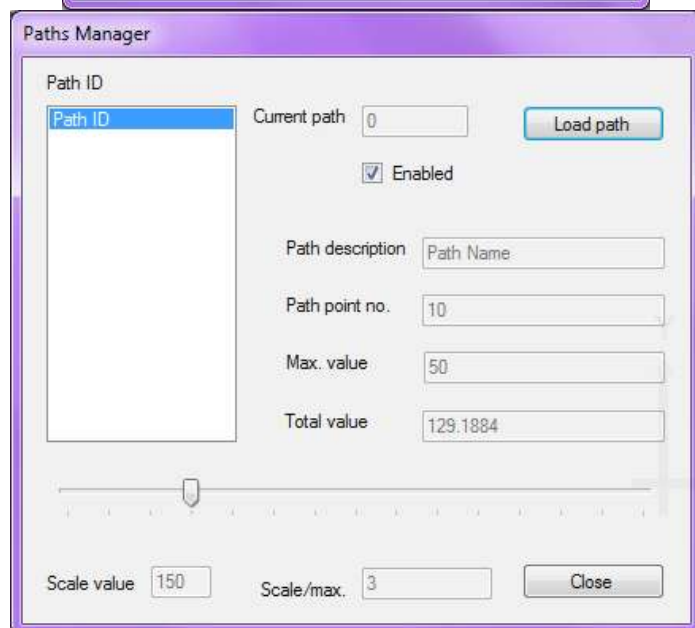
The objective of this tutorial is to use paths in PLPost

I – Create a path file is a text file (.txt format) that contains a table with values relative to the X and Y coordinates of each point. The first line the text file contains the Path ID, then the Path Name and the third line contains the number of points and then the values. The first column is the X coordinate and the second column is the Y coordinate, whilst the third and final column is the values column.

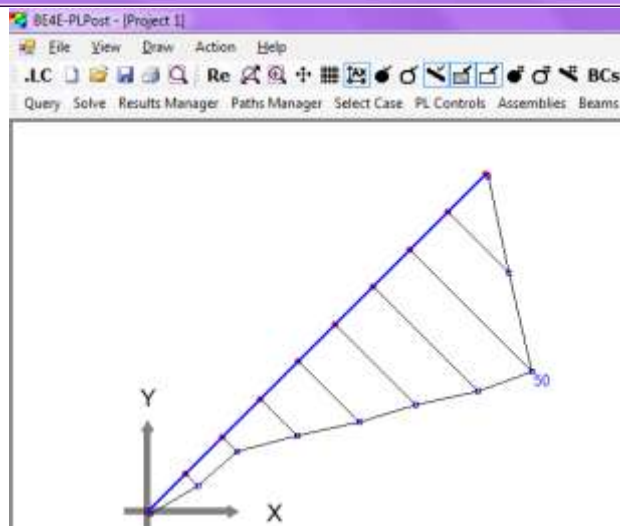


```
Path ID
Path Name
10
0      0      1
0.5    0.5    5
1      1      6
1.5    1.5    15
2      2      25
2.5    2.5    33
3      3      43
3.5    3.5    50
4      4      25
4.5    4.5    1
```

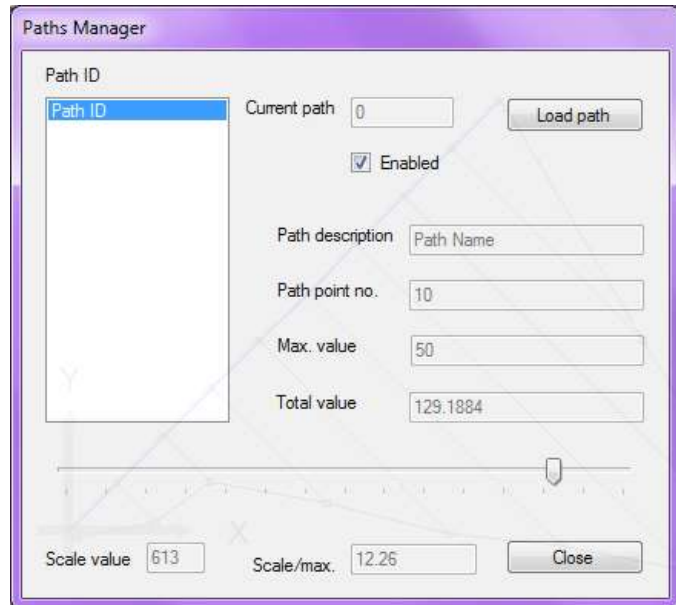
II - In PLPost, click Paths Manager. Import the path file created by clicking on Load path. Path point no. is the number of points the file has. The max value is the highest value of the points we entered. The total value is the integration of the curve or in other words the area under the curve. These values cannot be adjusted as they are based on the file we imported.



III – Refresh and the plot should appear as shown.



IV – Open Paths Manager, it is possible to adjust the scale of the strip using the sliding scale. This is a useful tool which adjusts the scale in case comparison is needed with other models in either the PLPak or Finite element programs. This is also useful when we have several strips very close to each other. Slide the scale to the right.



V - The curve becomes larger and vice versa if I slide it to the left.

